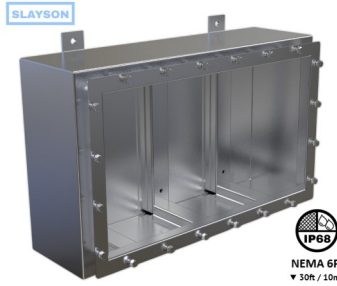
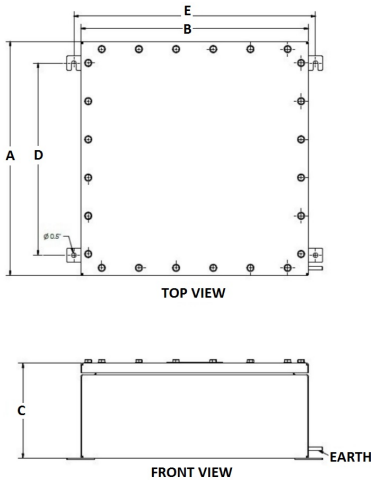




DEEP SEA SERIES

NEMA 6P



INDUSTRY STANDARDS

Engineered for NEMA Type 6P requirements
(meets NEMA 4,4X,6P and IP68)

APPLICATION

SLAYSON Submersible **Deep Sea Series** offers NEMA 6P / IP68 protection against water and dust ingress at depths up to 30ft / 10m. Deep Sea Enclosures are manufactured as standard from 14g Marine Grade 316 Stainless Steel, ensuring protection in harsh and corrosive environments.

MODIFICATION AND CUSTOMIZATION

SLAYSON excels at modifying and customizing all our products to meet your exact specifications. Contact our experienced Engineers about your project specific solution.

PART NUMBER MATERIAL CODE BUILDER

BSBI—Type 316 Marine Grade Stainless Steel (14g)

BAMI—Aluminum (0.064")

SPECIFICATIONS

- Submersible up to 30 ft / 10 m
- Manufactured from 14g Type 316 Marine Grade Stainless Steel (Material Code: **S**) as standard
Optional Aluminum (Material Code: **A**)
- Seams continuously welded and dressed
- Single piece Neoprene gasket
- Minimum flange width to maximize internal capacity
- Mounting brackets on enclosure rear for direct wall mounting
- Internal Ribs
- Grounding stud on body
- Mounting studs for optional internal mount plates

ACCESSORIES

- Internal Mount/Back Plates
- External ground mounting stand
- Custom entry holes
- IP68 Stainless Steel cable glands / chord grips
- EMI / RFI Shielding (MIL-STD-285)
- Hinged Lid
- Welded in place Bosses
- Finish options available
- Shock & Vibration Protection (MIL-STD-810)

PART NUMBER	A	B	C	D Mount	E Mount	BACK PLATE PART NUMBER	Height: in (mm)	Width: in (mm)	Gauge	Weight (lbs)
	Height: in (mm)	Width: in (mm)	Depth: in (mm)	Height: in (mm)	Width: in (mm)					
BSBI363624	36 (914.4)	36 (914.4)	24 (609.6)	32 (812.8)	38 (965.2)	ASPI3232	32 (812.8)	32 (812.8)	14	53
BSBI363612	36 (914.4)	36 (914.4)	12 (304.8)	32 (812.8)	38 (965.2)	ASPI3232	32 (812.8)	32 (812.8)	14	45
BSBI343424	34 (863.6)	34 (863.6)	24 (609.6)	30 (762)	36 (914.4)	ASPI3030	30 (762)	30 (762)	14	51
BSBI343412	34 (863.6)	34 (863.6)	12 (304.8)	30 (762)	36 (914.4)	ASPI3030	30 (762)	30 (762)	14	43
BSBI303018	30 (762)	30 (762)	18 (457.2)	26 (660.4)	32 (812.8)	ASPI2626	26 (660.4)	26 (660.4)	14	43
BSBI302618	30 (762)	26 (660.4)	18 (457.2)	26 (660.4)	28 (711.2)	ASPI2622	26 (660.4)	22 (558.8)	14	41
BSBI282816	28 (711.2)	28 (711.2)	16 (406.4)	24 (609.6)	30 (762)	ASPI2424	24 (609.6)	24 (609.6)	14	40
ASMI282416	28 (711.2)	24 (609.6)	16 (406.4)	24 (609.6)	26 (660.4)	ASPI2422	24 (609.6)	22 (558.8)	14	37
BSBI262614	26 (660.4)	26 (660.4)	14 (355.6)	22 (558.8)	28 (711.2)	ASPI2222	22 (558.8)	22 (558.8)	14	36
BSBI262214	26 (660.4)	22 (558.8)	14 (355.6)	22 (558.8)	24 (609.6)	ASPI2218	22 (558.8)	18 (457.2)	14	34
BSBI242412	24 (609.6)	24 (609.6)	12 (304.8)	20 (508)	26 (660.4)	ASPI2020	20 (508)	20 (508)	14	33